

Transcriptome of tumor-infiltrating T cells in colorectal cancer patients uncovered a unique gene signature in CD4⁺ T cells associated with poor disease-specific survival

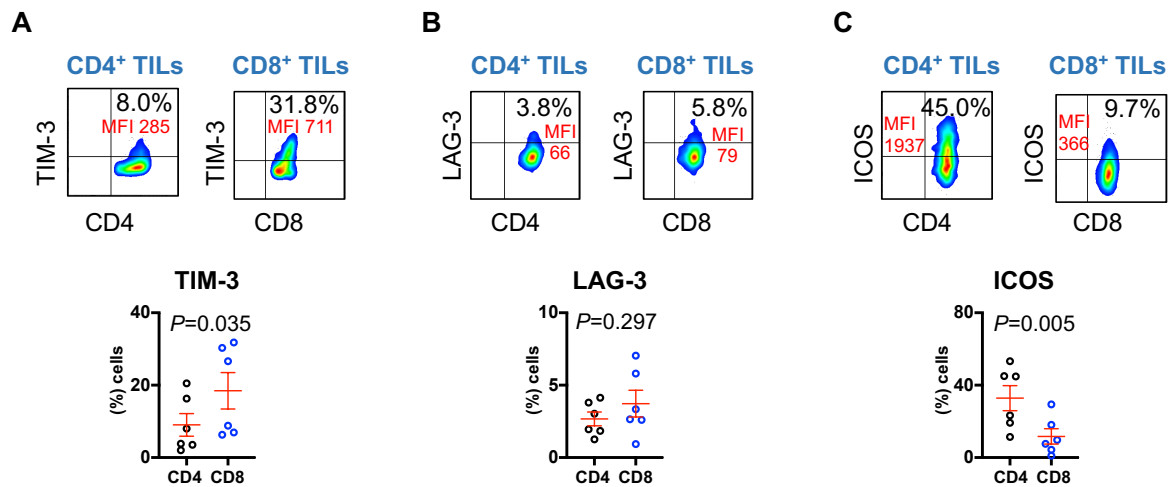


Figure S1. Expression levels of selected dysregulated genes on CD4⁺ and CD8⁺ TILs. We validated protein expression of selective immune checkpoint genes; HAVCR2 (gene for TIM-3), ICOS and LAG-3 in 6 CRC patients out of our patient cohort. Representative flow cytometric plots show the percentage and mean fluorescent intensity (MFI), and scatter plots show differences in percentage of TIM-3 (A), ICOS (B) and LAG-3 (C) expressing CD4⁺ and CD8⁺ TILs from 6 CRC patients.