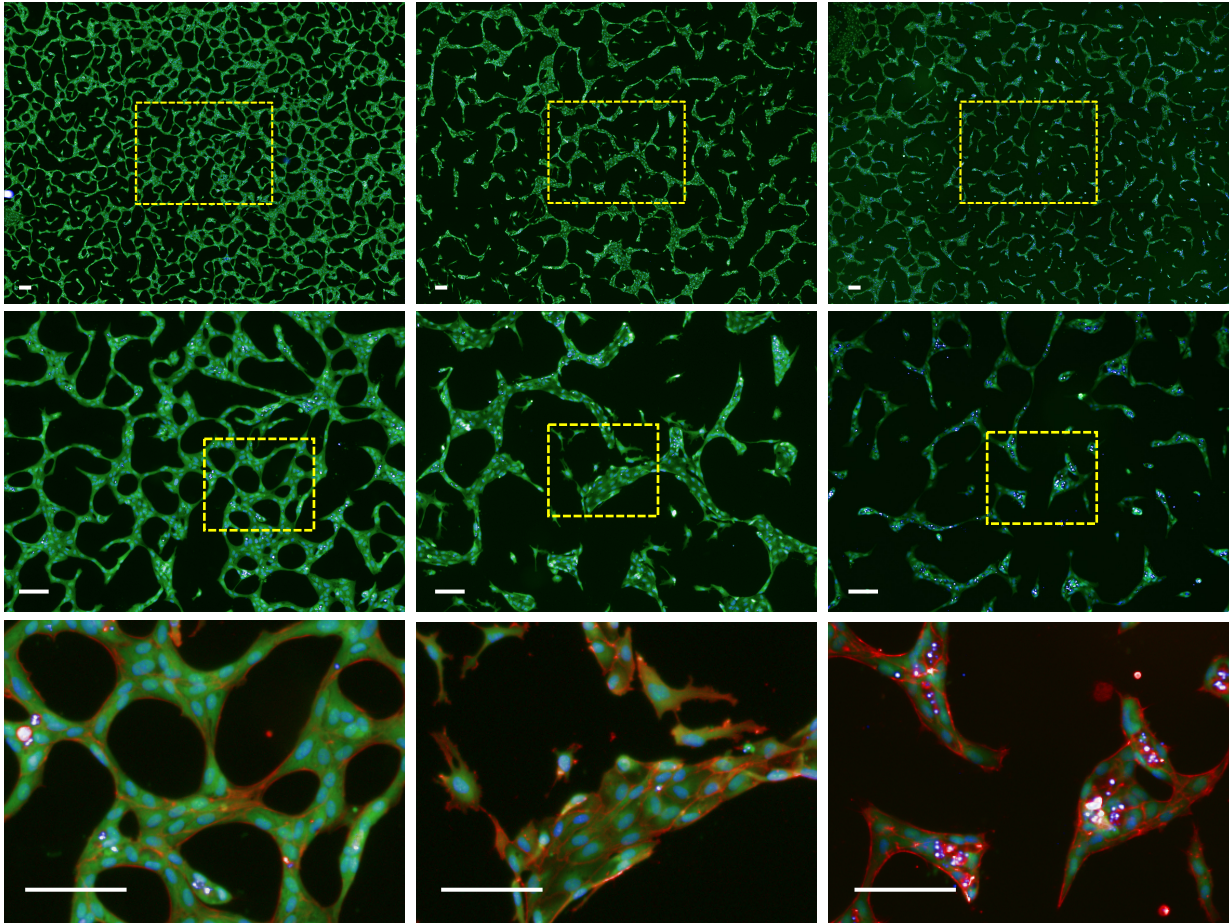


Matrigel      Type I Collagen      Mixture



Cell mask/**Phalloidin**/DAPI

**Figure S1. Effect of different ECM settings on endothelial morphogenesis.** HUVECs were seeded on coated 96-well plates with thin layer of Matrigel. Matrigel, type I collagen gel, or Matrigel/type I collagen gel mixture was added. Cells were incubated for 48 hours. Next, the new forming structures were fixed and stained with Green Cell Mask (Cell body), Phalloidin (actin filaments), and DAPI (Nuclei). The fluorescent images of plates were acquired using high content imaging system (Operetta). Scale bar = 100  $\mu$ m