

Table S1. DNA primers used for quantitative reverse transcription polymerase chain reaction. (qRT-PCR)

Gene	Primer	Sequence	Reference
SOD	Forward	5'-TGGAGCACCAGAAGATGA-3'	Vwioko et al, 2017
	Reverse	5'-CTCGTGTCC ACCCTTTCC-3'	
CAT	Forward	5'-CTGAACGTGTTGTGCATGCA-3'	Chen et al, 2016
	Reverse	5'-TAGATCCTTCGTCGCATGGC-3'	
RBCS	Forward	5'-AAGGTCGGCTTCGTGTA-3'	
	Reverse	5'-CTGCGTCTGCTTGATGT-3'	
RBCL	Forward	5'-TGCTCGTCGTTCTCCAGTGTAT-3'	
	Reverse	5'-GCTGCCGTTGAGGAAGGTATTG-3'	
HKT1	Forward	5'-TCTTCATCGTCGTCATCTG-3'	
	Reverse	5'-CCTTCCACACTCCACTTG-3'	
H ⁺ -PPase	Forward	5'-GGTATTCAGTGGTGTGCTAT-3'	
	Reverse	5'-GGTGGTCCTTCGTCCTTA-3'	

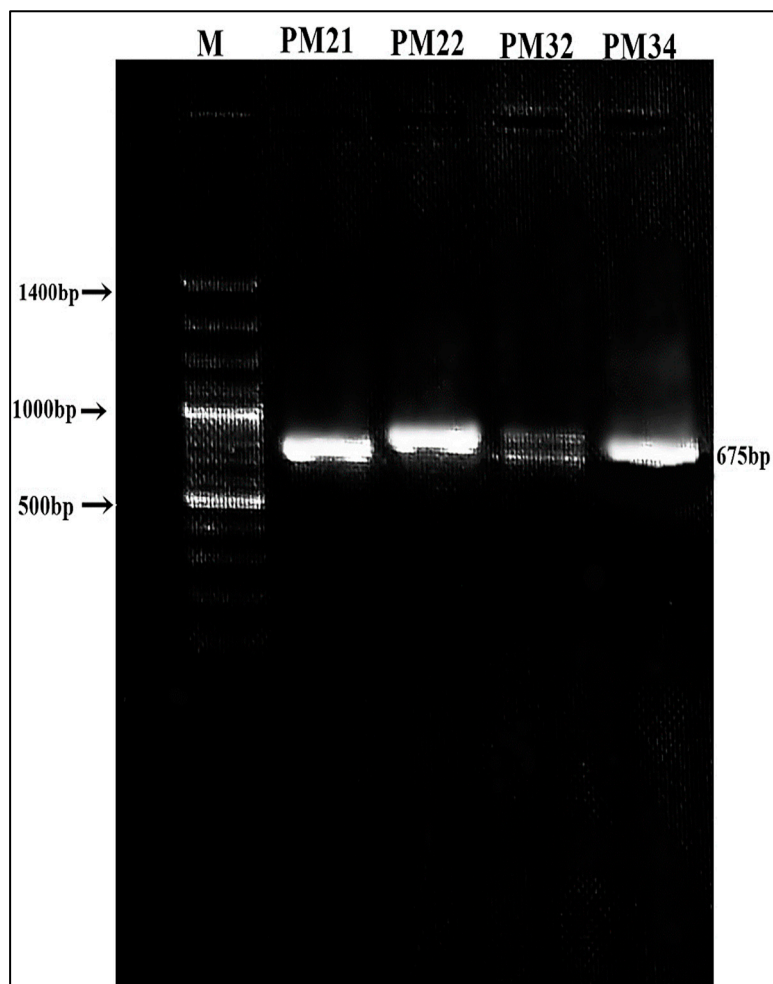


Figure S1. PCR amplified product of the *sfp* gene